
Vertica Knowledge Base Article

Vertica QuickStart for Qlik Sense

Document Release Date: 6/15/2018

Legal Notices

Warranty

The only warranties for Micro Focus International plc products and services are set forth in the express warranty statements accompanying such products and services. Nothing herein should be construed as constituting an additional warranty. Micro Focus shall not be liable for technical or editorial errors or omissions contained herein.

The information contained herein is subject to change without notice.

Restricted Rights Legend

Confidential computer software. Valid license from Micro Focus required for possession, use or copying. Consistent with FAR 12.211 and 12.212, Commercial Computer Software, Computer Software Documentation, and Technical Data for Commercial Items are licensed to the U.S. Government under vendor's standard commercial license.

Copyright Notice

© Copyright 2015-2018 Micro Focus International plc

Trademark Notices

Adobe™ is a trademark of Adobe Systems Incorporated.

Microsoft® and Windows® are U.S. registered trademarks of Microsoft Corporation.

UNIX® is a registered trademark of The Open Group.

This product includes an interface of the 'zlib' general purpose compression library, which is Copyright © 1995-2002 Jean-loup Gailly and Mark Adler.

Contents

Vertica QuickStart for Qlik Sense	4
About the Vertica QuickStarts	4
About Qlik Sense	4
Requirements	4
Install the Software	4
Install the Vertica Database Server	4
Install the VMart Example Database	5
Install Qlik Sense Desktop	5
Install the ODBC Client Driver	5
Download and Install Vertica Client	5
Create a Data Source Name	5
Download the QuickStart	6
Connect to the Vmart Data Source	6
About the QuickStart Dashboards	10
Executive Dashboard	10
Online Sales Dashboard	11
Store Sales Dashboard	11
Customer Dashboard	12
Product Dashboard	12
Vendor Dashboard	13
Inventory Dashboard	13
Find More Information	14

Vertica QuickStart for Qlik Sense

The Vertica QuickStart for Qlik Sense is a sample BI application implemented as a Qlik Sense app and powered by Vertica Analytic Database. The dashboards present sample retail data for analysis. The QuickStart shows how retail companies could use Vertica and Qlik Sense to quickly explore, visualize, and gain insight into their data stored in Vertica.

About the Vertica QuickStarts

The QuickStarts are free, sample applications created using front-end products from Vertica technology partners.

The QuickStarts are posted for download on my.vertica.com/quickstart.

For an overview, watch this short [video](#).

Note The Vertica QuickStarts are freely available for demonstration and educational purposes. They are not governed by any license or support agreements and are not suitable for deployment in production environments.

About Qlik Sense

Qlik Sense is a data visualization and discovery tool that lets you analyze data easily and make business decisions quickly. For details, see the [Qlik Sense](#) website.

Requirements

The Vertica QuickStart for Qlik Sense requires a Vertica database server with a standard installation of the VMart example database, a Vertica client, and Qlik Sense.

Install the Software

To install the software that is required for running the QuickStart, follow these steps:

- [Install the Vertica Database Server](#)
- [Install the VMart Example Database](#)
- [Install Qlik Sense Desktop](#)
- [Install the ODBC Client Driver](#)

Install the Vertica Database Server

If you do not already have Vertica, you can download the Community Edition free of charge:

1. Navigate to my.vertica.com.
2. Log in or click **Register Now** to create an account

3. On the Downloads menu, click **Community Edition**.
4. Follow the on-screen instructions to download and install the Vertica Community Edition.

Install the VMart Example Database

The Vertica QuickStart for Qlik Sense assumes a default installation of the Vertica VMart example database.

To install VMart, follow the instructions in the Vertica documentation:

- [Introducing the VMart Example Database](#)
- [Installing and Connecting to the VMart Example Database](#)

For details, see [VMart Example Database Schema, Tables, and Scripts](#).

Install Qlik Sense Desktop

Qlik Sense Desktop runs on Windows desktop platforms. If you do not have Qlik Sense Desktop, you can download and install it as follows:

1. Go to the [Qlik Sense website](#).
2. Download the Qlik Sense installation file.
3. Launch the executable.
4. Follow the prompts to install Qlik Sense Desktop.

Install the ODBC Client Driver

Before you can connect to Vertica using Qlik Sense, you must download and install the Vertica client package. This client package includes the Vertica ODBC driver that Qlik Sense uses to connect to Vertica.

Download and Install Vertica Client

1. Go to the [Vertica Client Drivers](#) page on the myVertica portal.
2. Download the Vertica client package that matches your version of Windows and Vertica server.
3. Follow the steps for installing the Vertica client as described in the [Vertica documentation](#).

Note Vertica drivers are forward compatible, so you can connect to the Vertica server using previous versions of the client. For more information, see [Client Driver and Server Version Compatibility](#) in the Vertica documentation.

Create a Data Source Name

Qlik Sense Desktop uses a Data Source Name (DSN) to connect to Vertica. You must create a DSN based on the architecture of your operating system and the Qlik Sense version that you installed. Qlik Sense Desktop will use this DSN to connect to your Vertica database.

To set up a 64-bit DSN:

1. Go to the Windows **Run** window,
2. Type **Set up data sources (ODBC)**.
3. Select the executable.

For a 64-bit windows machine, this shortcut points to 64-bit ODBC data sources executable, located in C:\Windows\System32\.

For detailed information about creating a DSN, follow the instructions in the Vertica documentation: [Setting Up an ODBC DSN](#).

Download the QuickStart

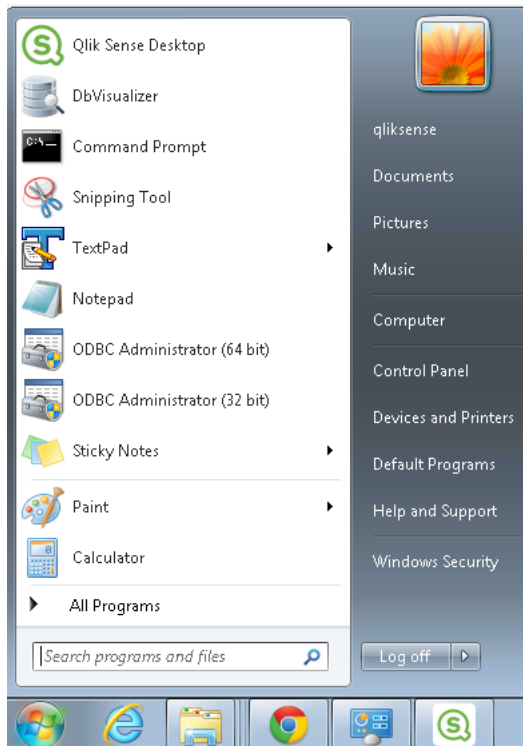
1. Navigate to my.vertica.com/quickstart
2. Select **Vertica QuickStart for Qlik Sense**.
3. Log in or create an account.
4. Click **Download**.

Connect to the Vmart Data Source

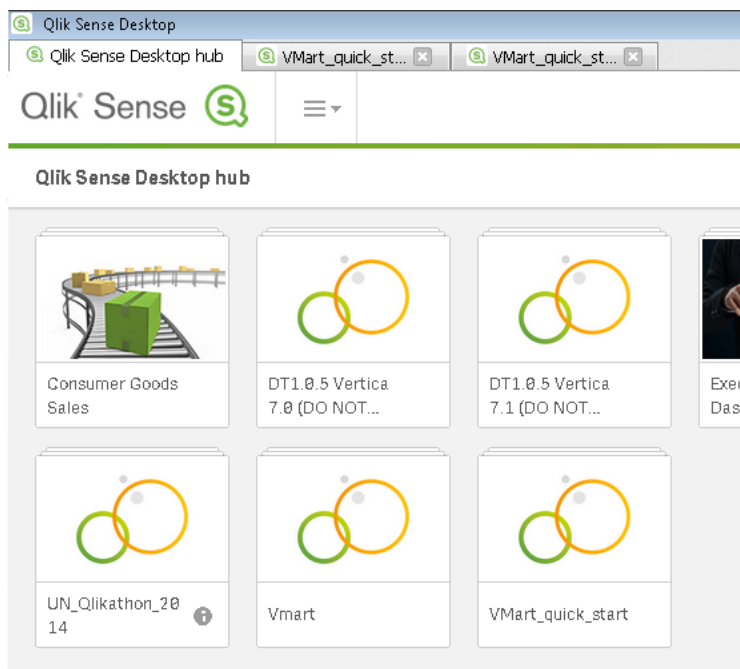
1. Navigate to the folder where you downloaded the compressed file and extract the contents.
2. Place the QuickStart Qlik Sense file, qvf, in the default Qlik Sense applications folder. On Windows, the default Qlik Sense apps location is:

```
C:\Users\dbadmin\Documents\Qlik\Sense\Apps
```

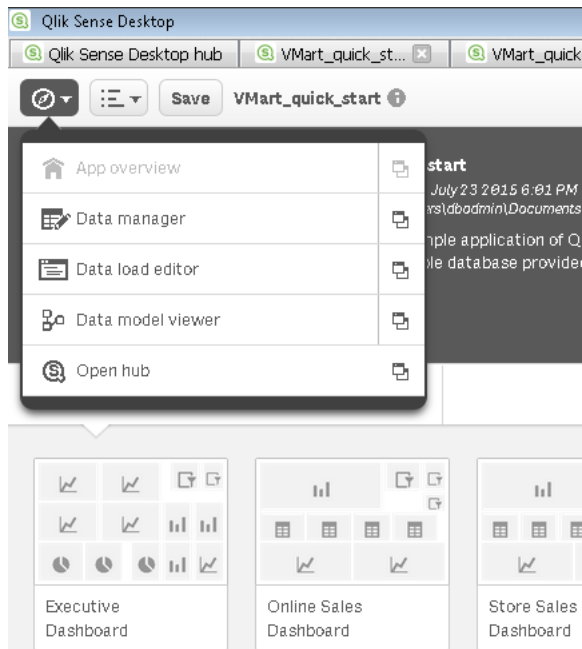
3. From the Windows **Start** menu, open **Qlik Sense Desktop**.



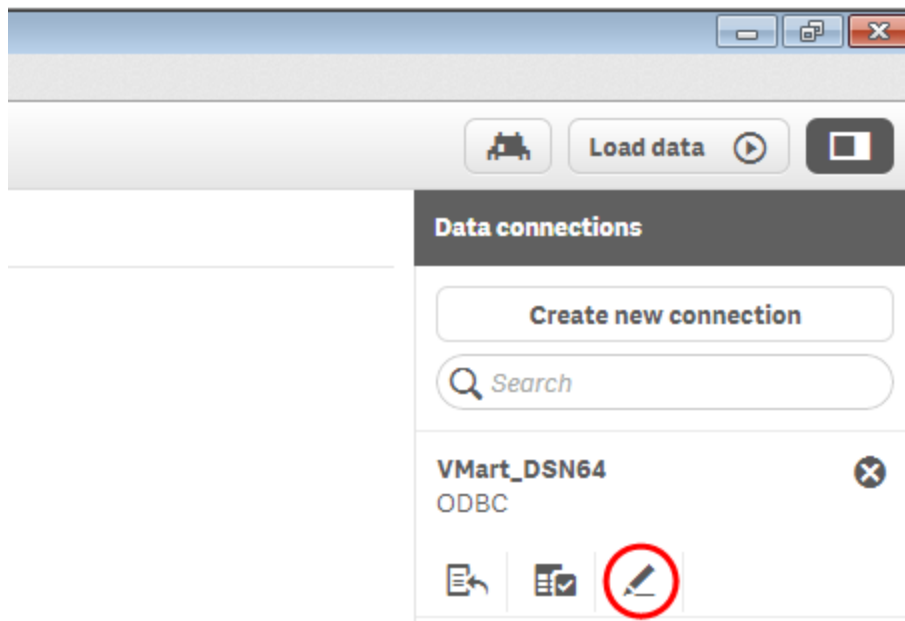
4. On the **Qlik Sense Desktop** hub tab, click the **VMart_quick_start**.



5. On the **Navigation** menu, click **Data load editor** to connect to your Vertica Vmart database.



6. On the **Data connections** panel on the right-hand side of the screen, click the **Edit connection** icon.



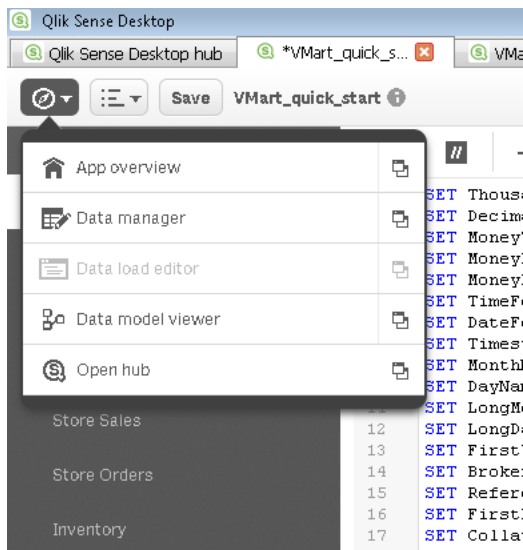
7. In the **Edit connection (ODBC)** dialog box, select the appropriate bitness and the DSN connection that you previously created.
8. Enter the username and password.
9. If the DSN has a saved username and password, you can leave those fields blank. Leave the default name VMart and click **Save**.



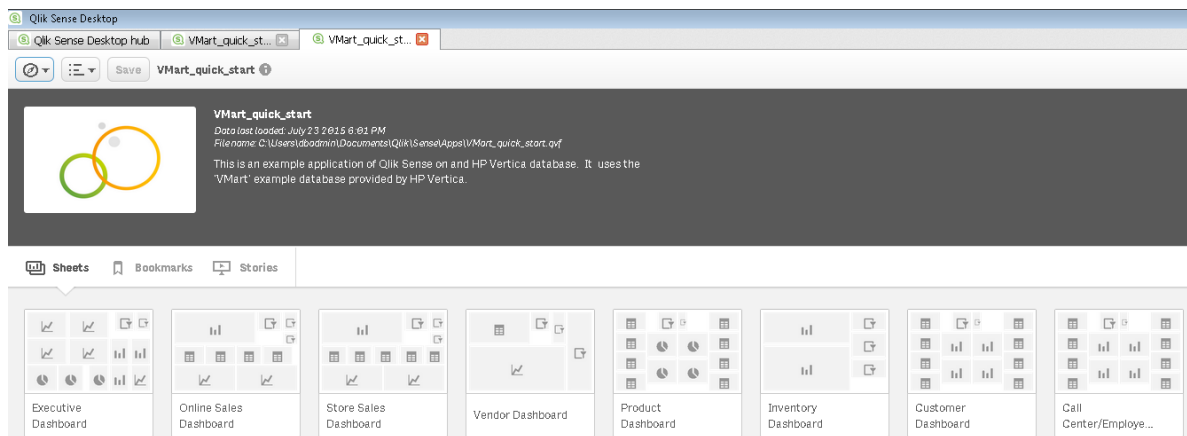
10. On the right-hand side of the window, click **Load data**.

Note The load process may take some time, possibly several minutes.

11. To view the dashboards, on the Navigation menu, click App overview.



12. Click the dashboard that you want to explore.



About the QuickStart Dashboards

The QuickStart dashboards present sample business and operational data that a large retail chain might track over time. The chain operates brick-and-mortar stores and an online marketplace. It sells a wide variety of products that it purchases from different vendors.

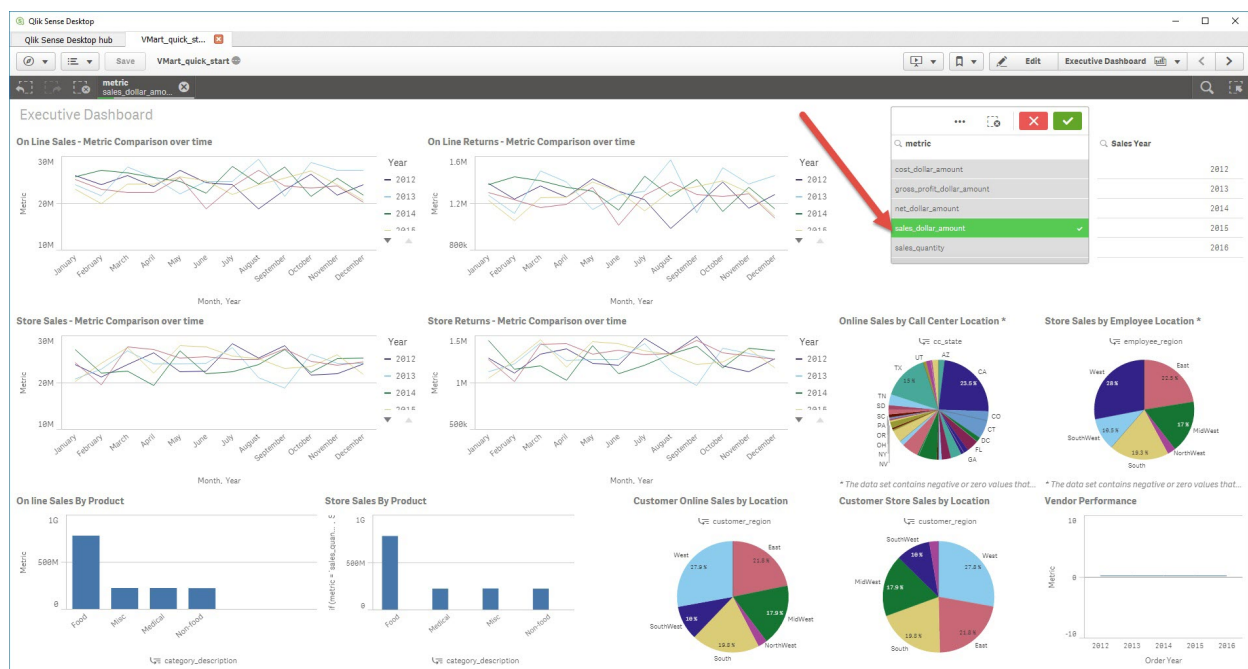
In this section, we show you a few of the dashboards.

Note The data in your dashboards will not match the data in the screen shots in this document. This is because the VMart data generator generates data randomly.

Executive Dashboard

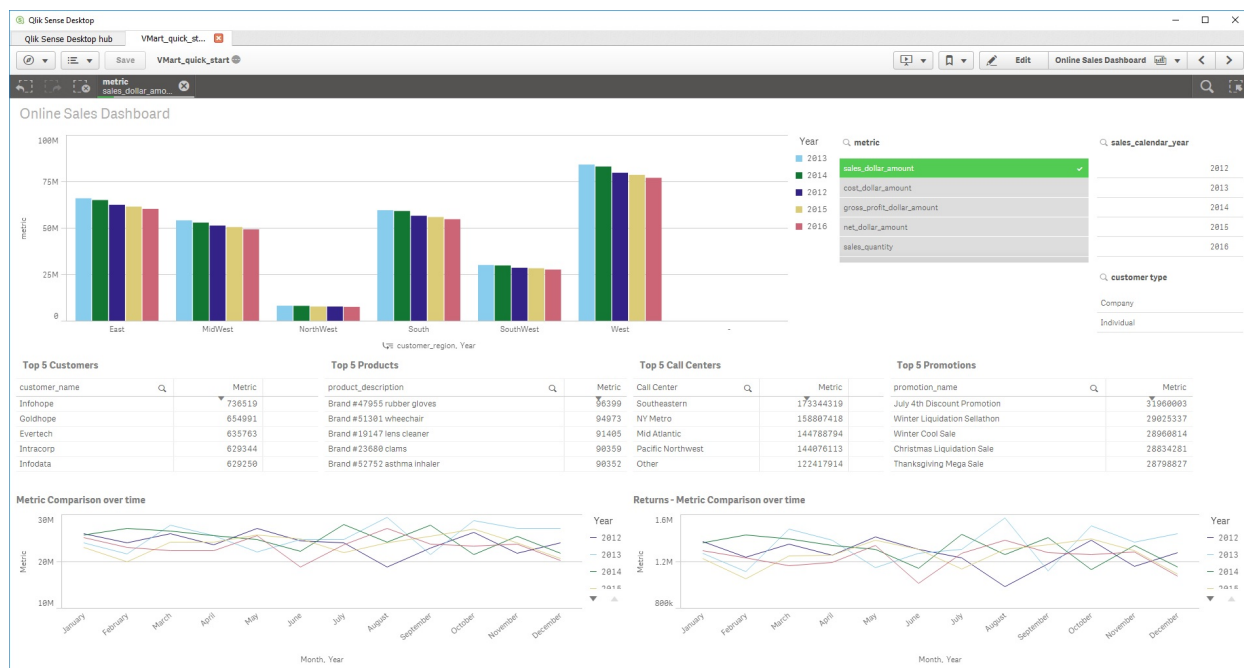
The Executive Dashboard presents a high-level view of the business data that is shown in greater detail in the other dashboards. You can use this dashboard to analyze the overall functioning of the business over time.

Select the sales_dollar_amount metric to see a display like the following:



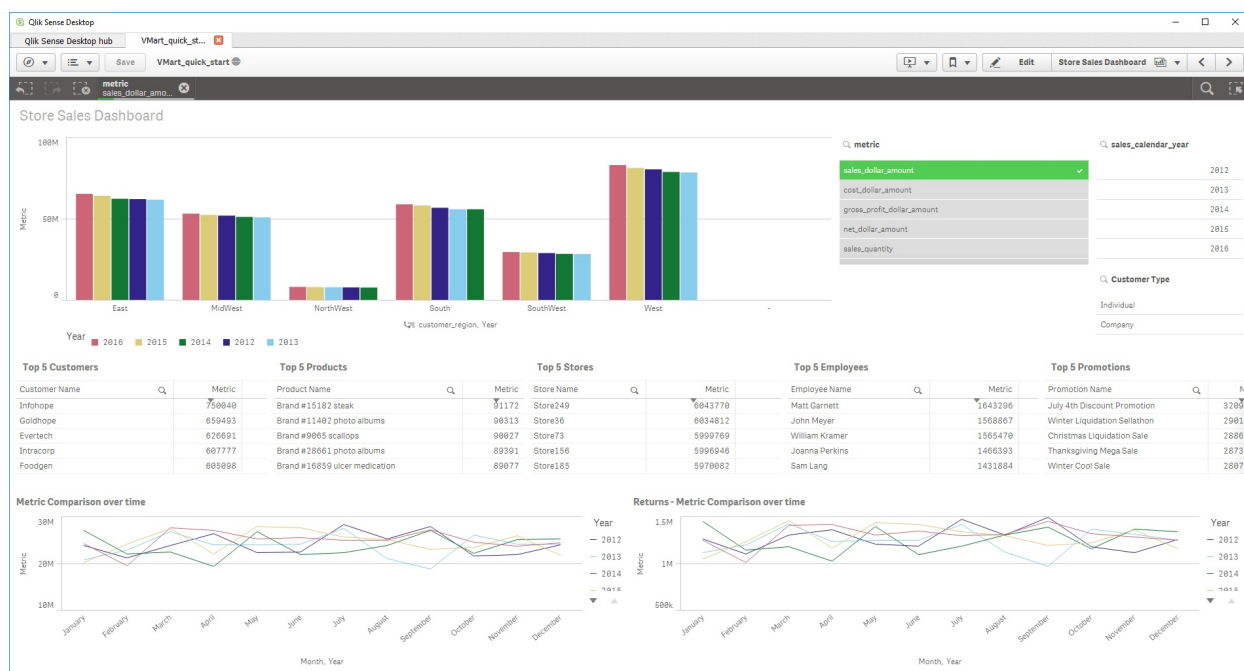
Online Sales Dashboard

This dashboard presents information that you can use to analyze the performance of the chain's online sales over time.



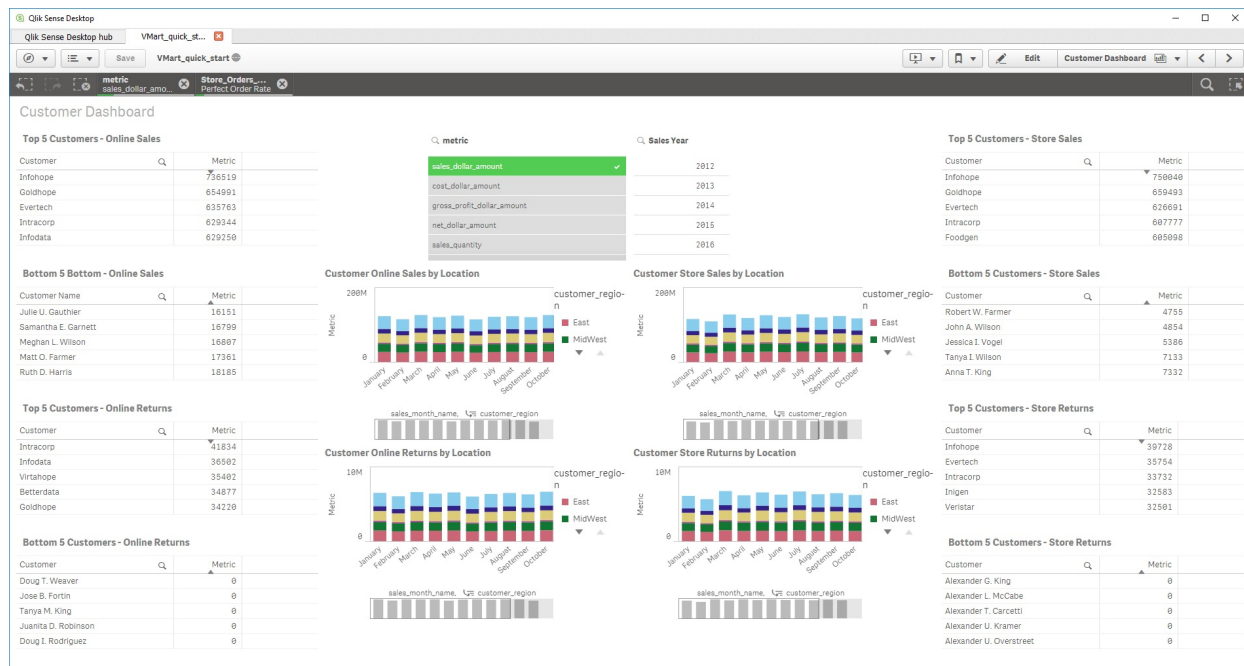
Store Sales Dashboard

This dashboard presents information that you can use to analyze the performance of the chain's store sales over time.



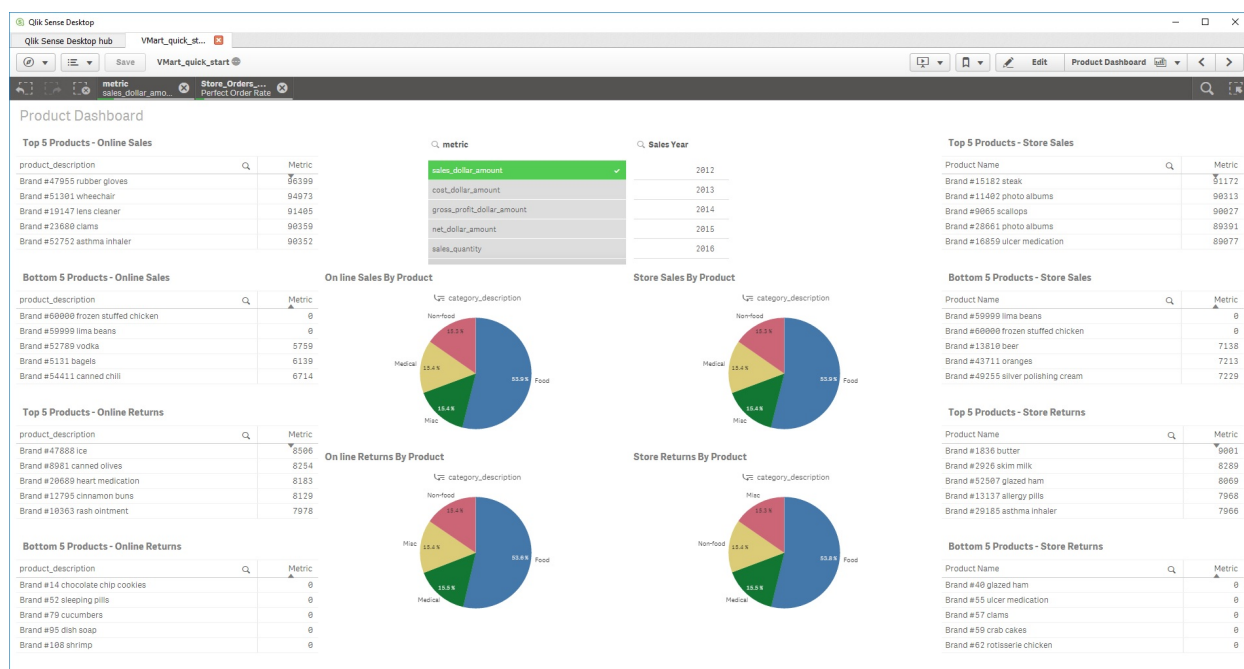
Customer Dashboard

This dashboard presents information that you can use to discover patterns of customer behavior over time.



Product Dashboard

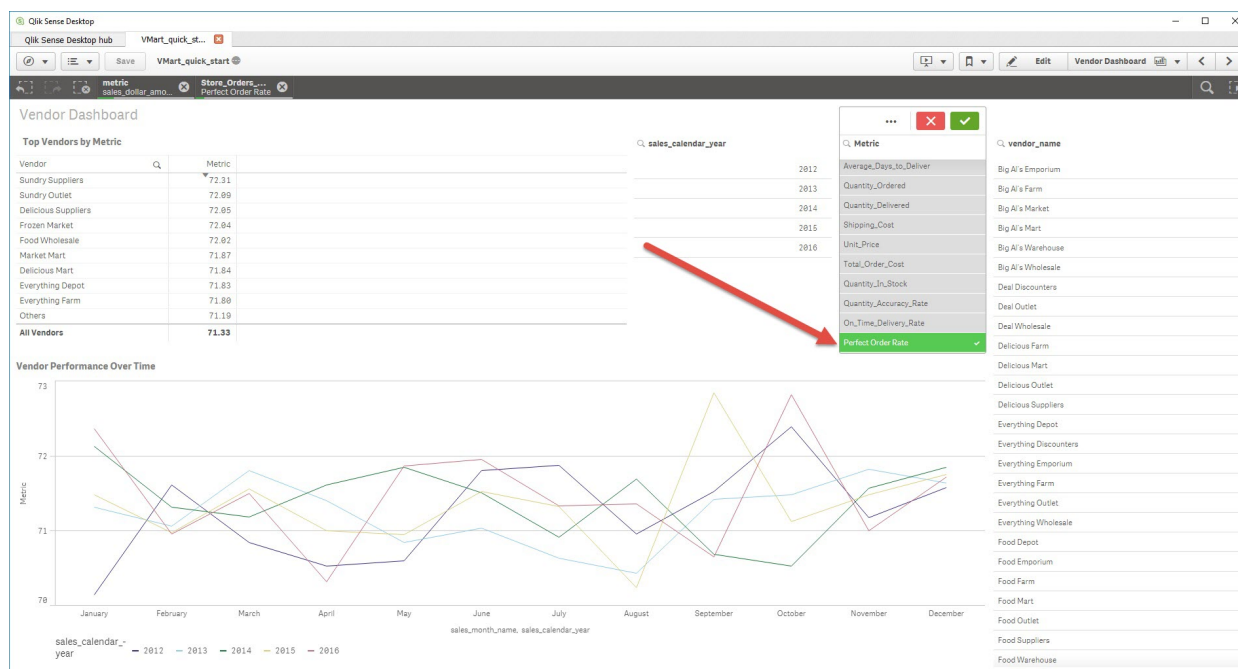
This dashboard presents information that you can use to analyze products sold online and in stores over time.



Vendor Dashboard

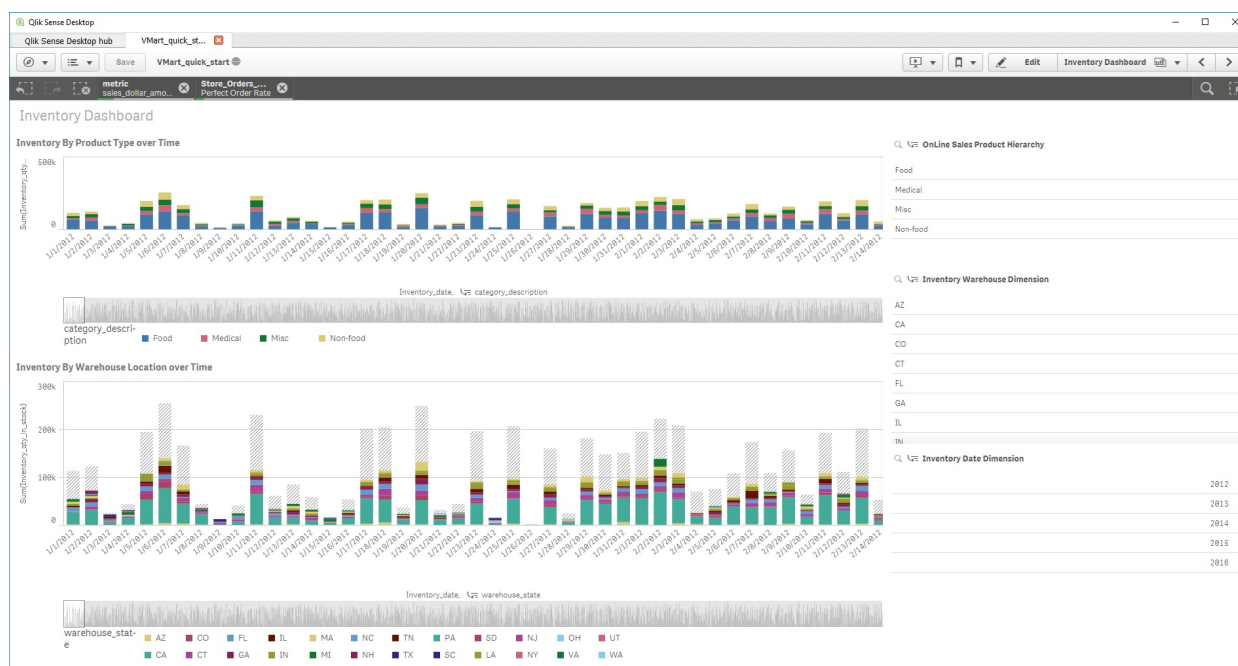
This dashboard presents information that you can use to analyze the chain's interaction with different vendors over time.

Choose the metric **Perfect Order Rate** to see a display like the following:



Inventory Dashboard

This dashboard presents information that you can use to analyze the chain's inventory over time.



Find More Information

- [Qlik Sense](#)
- [Vertica Community Edition](#)
- [Vertica User Community](#)
- [Vertica Documentation](#)